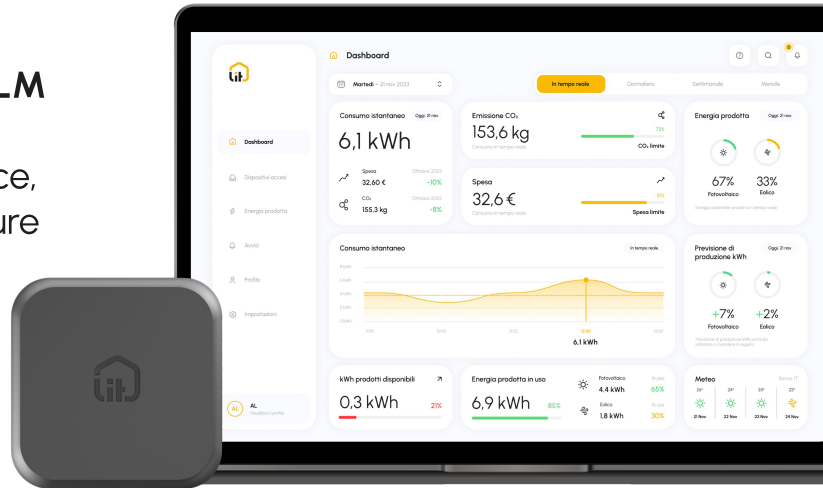




lit offers office energy monitoring using NILM technology based on Machine Learning.

It measures the consumption of each device, providing data on kWh, CO₂ and expenditure via dashboard.

It monitors the switch-on status in real time, reports faults and allows control of home automation devices via the dashboard. It also downloads data on energy used with a simple click in the format of your choice.



Functionality



Direct measurements

The solution measures current and voltage, calculates active and reactive power, and reports the instantaneous active power of the building. It also calculates the CO₂ emitted and the cost in Euro based on the user's contract.



Monitoring Obsolescence and Malfunctions

The solution analyses the predicted consumption of devices to assess their obsolescence and detect anomalies, using historical data.



Emissions and energy costs

The solution calculates the CO₂ emitted and Euros spent per device, based on the cumulative consumption derived from the instantaneous consumption predicted by the disaggregation algorithm.



Home automation integration

Home automation device APIs, including Matter I, are integrated for remote control of devices via the dashboard.



Real-Time Monitoring and Notifications

The dashboard shows the consumption status of the office and recognised devices. Notifications inform the user about important data.



SDK and API

The SDK under development allows modular integration with other home automation solutions and the creation of customised monitoring solutions.

Save the planet
by starting with
your wallet

